

A considerable amount of heat is wasted within boilerhouses and plant-rooms from valves, unions and flanges that are uninsulated. A typical valve can lose the same amount of heat as one-meter length of uninsulated pipework, but these units are often left exposed because of their awkward shape.

However, it is possible to fit customised jackets and covers to reduce such losses and ensure that heat is delivered into the building, where it is required. This method of insulation produces an excellent return on investment, less than two years, in the form of lower heating bills.

Removable / Reusable insulation jackets provide a simple solution, permit easy access to valves or other fittings for periodic inspection or maintenance, and can be replaced as needed.

Benefits

- | | | |
|-----------------------------|---|---|
| Practical | - | Reduces energy costs \ heat loss and improve safety |
| Ease of application | - | No tools or special skills required |
| Quick | - | Velcro weather seal flaps provides fast, effective installation, removal and reinstallation closure |
| Light Weight | - | One man application in most instances |
| Versatile | - | Provides a practical way to insulate both simple and hard-to-fit contours |
| Personnel Protection | - | Protects plant personnel from serious burns - hot equipment, traditionally uninstalled |
| Durability | - | Effective, long lasting means of insulation, resistant to water, oil, weathering and most caustics |
| Custom designed | - | Covers for fitting in unusual applications |
| Efficient | - | Excellent thermal insulation over a wide range of temperatures |

They save money !

The total cost of implementing this insulation in the boilerhouse was £1,400.00, It is estimated that this innovative insulation will save 112,000 kWh gas per year.

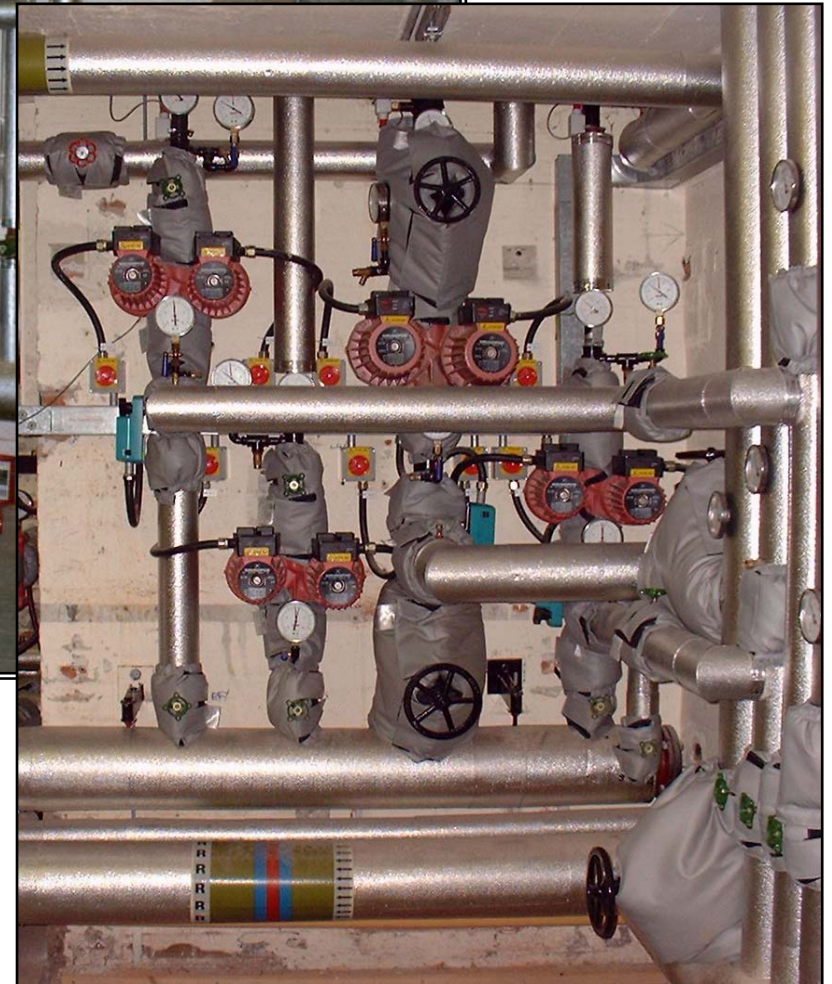
These insulation jackets save money and are economical, because they are reusable. You no longer need to ruin insulation materials just because you need to make minor piping repairs. Once repairs are completed, the jackets can be quickly reinsulated.

For more information:

Contact the Energy Management Team at the :-
Energy Efficiency Advice Centre
2-4 Market Place South
Leicester. LE1 5HB



Leicester City Council
Dovelands
Primary School



CASE STUDY

Innovative Insulation